

## pigPRO™ FLANGE MOUNT

To correctly supply an Apache pigPRO™ Flange Mounted Indicator, we require the following information on the existing pipeline flange connection.

### PIPE

Wall Thickness: \_\_\_\_\_  IN  MM

Nominal Size: \_\_\_\_\_  IN  MM

Maximum Operating Pressure:  
(cannot exceed 3000 psi)

\_\_\_\_\_  PSI  KPA

### FLANGE

Nominal Size: \_\_\_\_\_

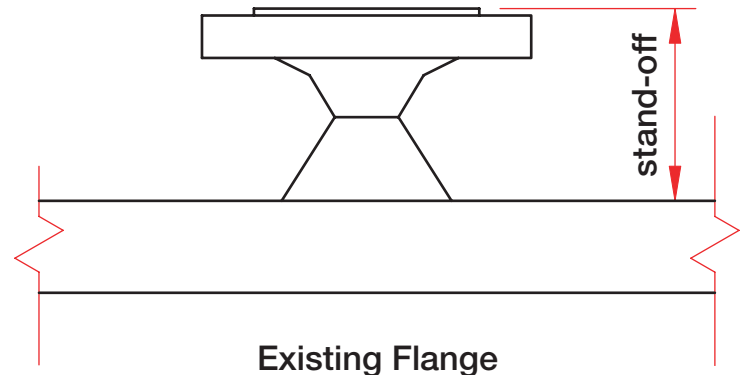
Pressure Class: \_\_\_\_\_  RF  RTJ

Bore - Schedule:  STD / SCH 40  SCH 160  
 XH / SCH 80  XXH

### STAND-OFF

Pipe O.D. to the top of the **RAISED FACE** portion of flange: (see drawing)

\_\_\_\_\_  IN  MM



AVAILABLE AT OUR  
U.S. DISTRIBUTOR



GEN-FM-07/14